

The Web of Mathematical Models: A Schema-based, Wiki-like, Interactive Platform

Thomas Grundmann, Jean-Marie Gaillourdet, Karsten Schmidt,
Arnd Poetzsch-Heffter, Stefan Deßloch and Martin Memmel

MathWikis, Nijmegen, 2011

Outline

- Introduction
 - Motivation
 - Definition of Model
 - Goals / Vision for the “Web of Models”
- Current State
 - Demonstration
 - Architecture
 - XModel Schema
- Outlook

Introduction

What is a Model?

A mathematical model is “a representation of the essential aspects of an existing system (or a system to be constructed) which presents knowledge of that system in usable form”.

Pieter Eykhoff (1974)

What is a Model?

- Descriptive models
 - Explain aspects of existing systems
 - Physical, sociological, or economical systems
- Constructive models
 - Describe systems to be constructed as part of engineering tasks or processes
- Abstract models
 - Model a certain class of phenomena
 - Not (yet) applied to a specific system

Goals and Vision

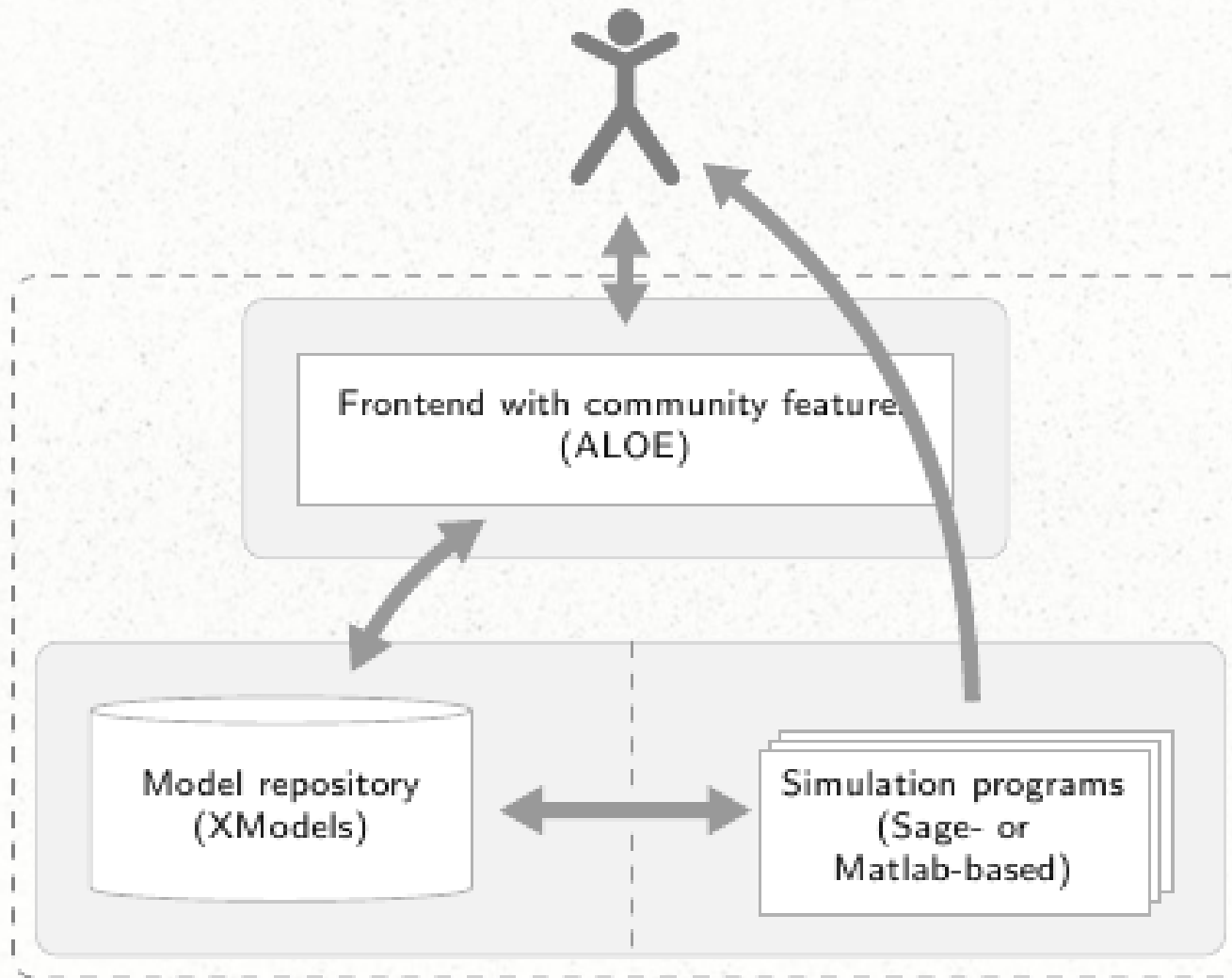
- Repository of mathematical models
 - Well-structured representation
 - Formally defined
 - Visualizations
 - model-specific simulations
 - Searchable (by categories, keyword, etc.)
 - Accessible and editable via the Web
 - Composition of models

Goals and Vision

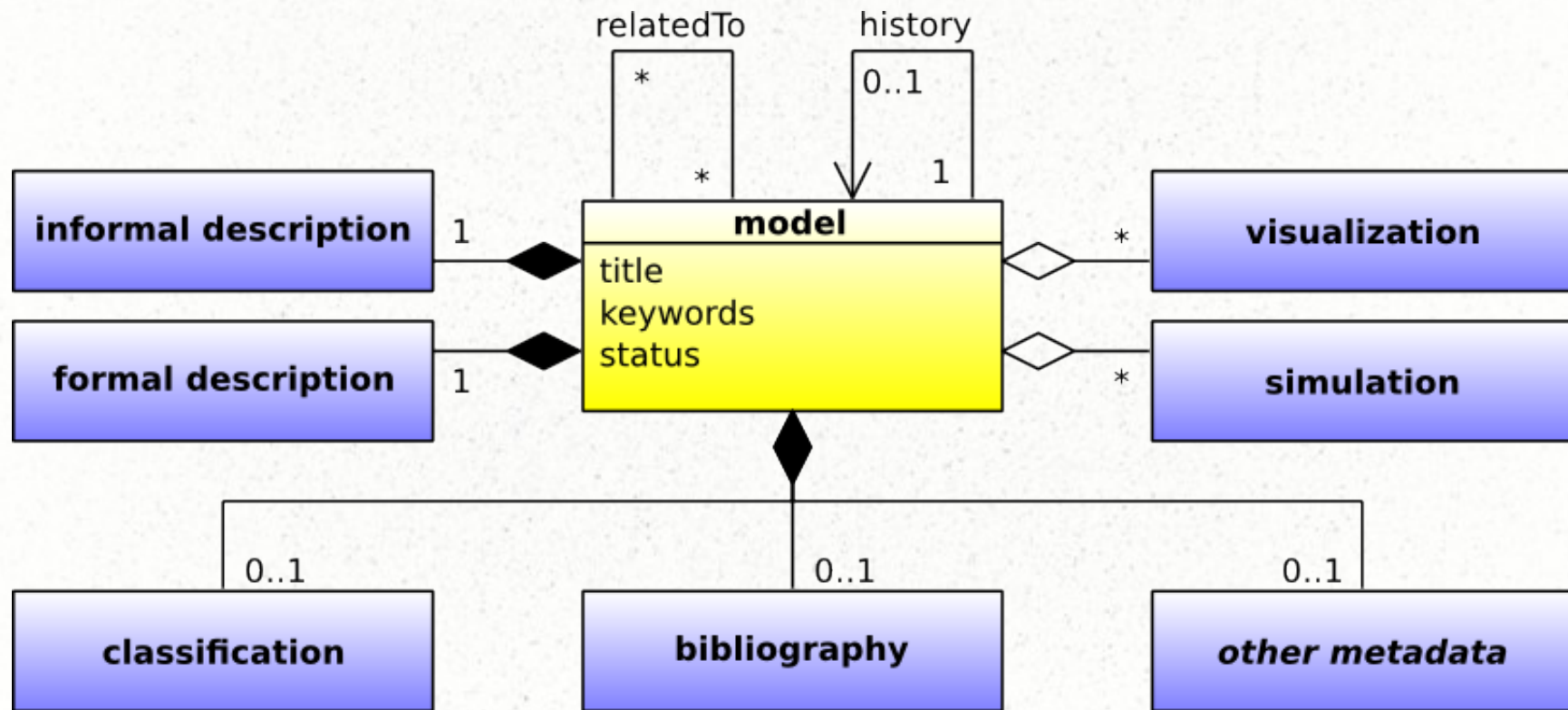
- Support for
 - Interactive creation, publishing and maintaining of models
 - Building a community
 - Quality evaluation of models

Current State

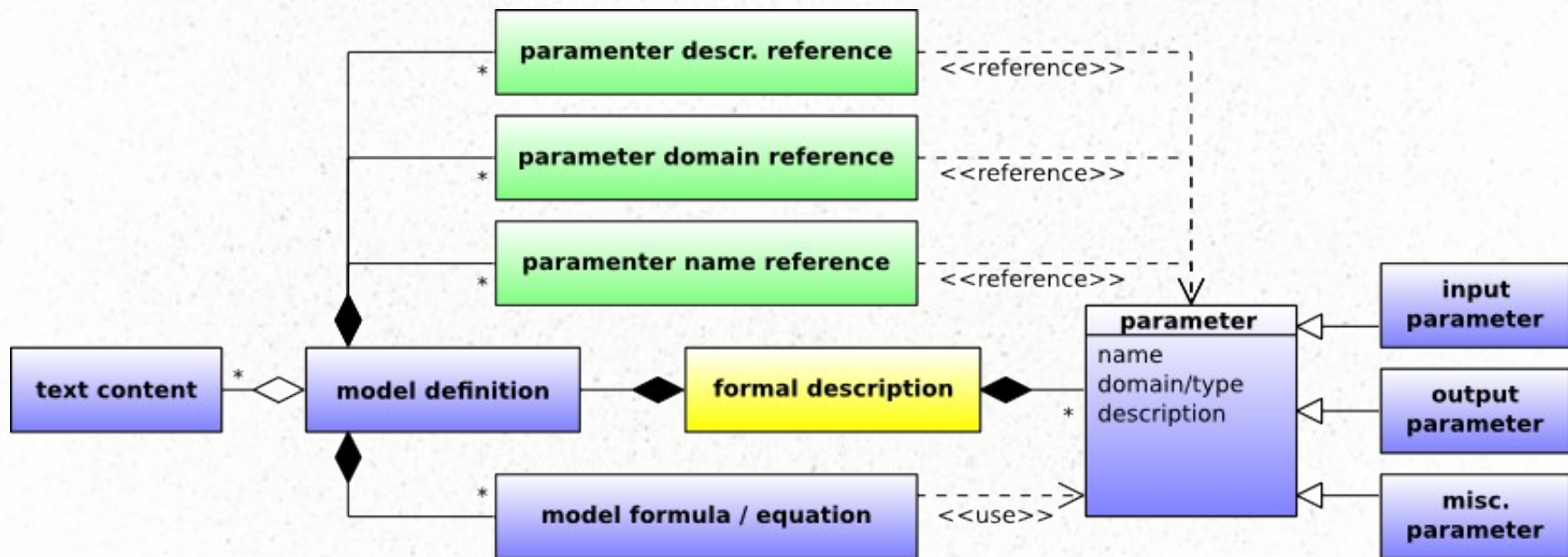
Architecture



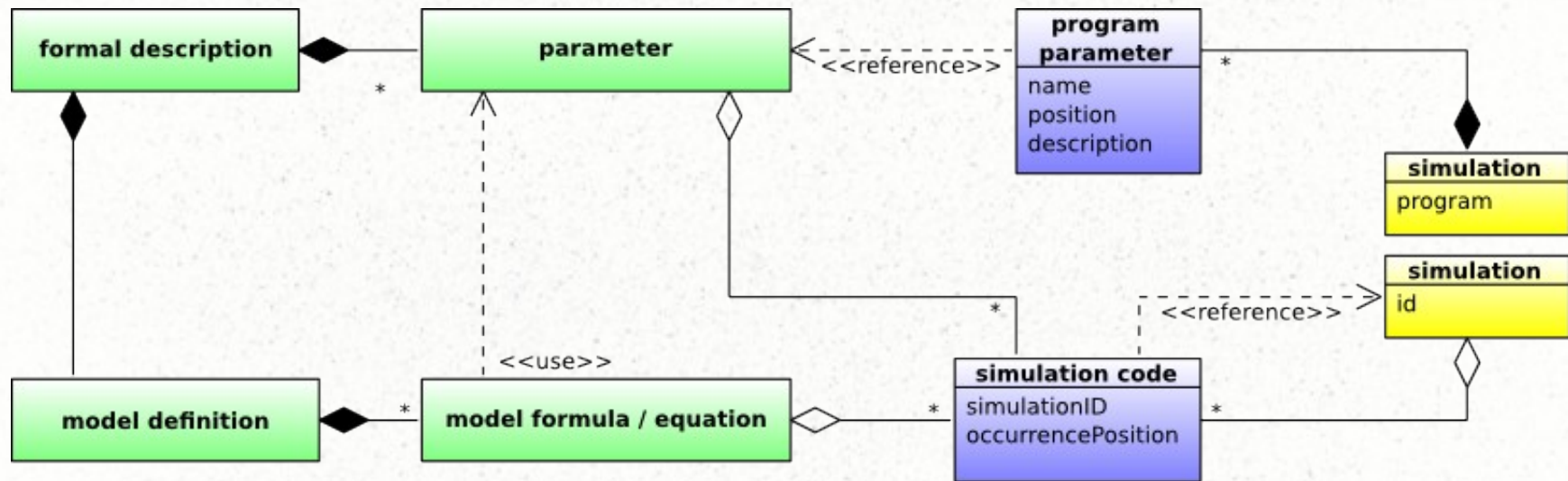
The XModel Schema



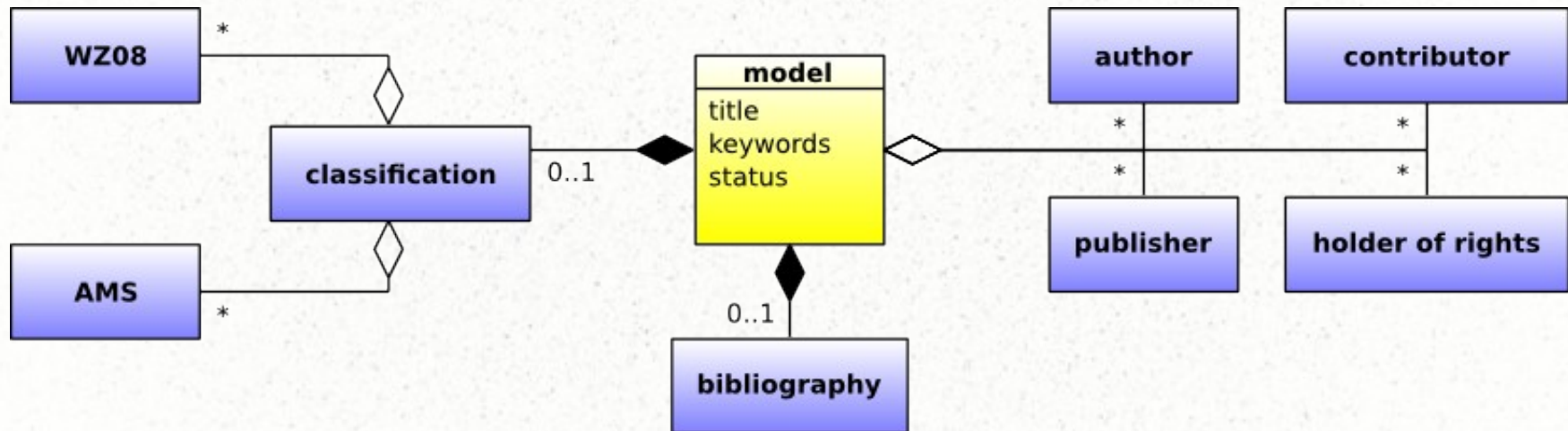
XModel: formal description



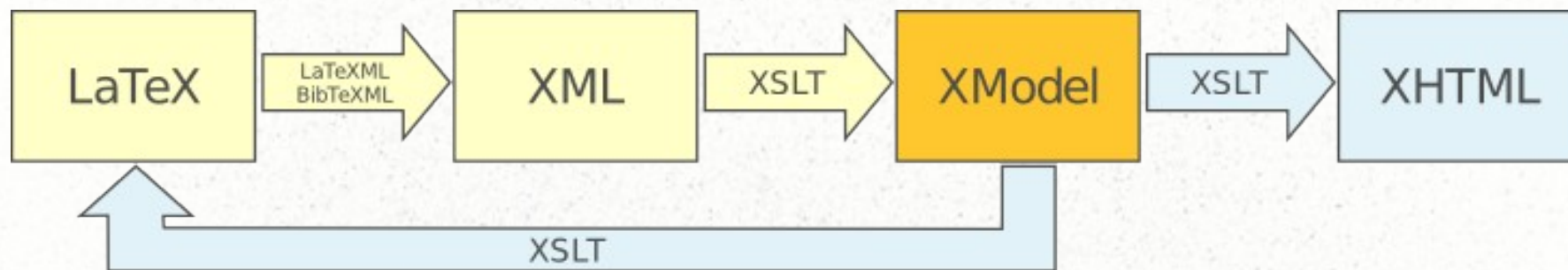
XModel: simulation



XModel: metadata



XModel: Processing chain



Outlook

Outlook

- Going online in Oktober 2011
- Building a user community
 - Increase the number of models
- Improve the platform
 - Better integration of simulations
 - Supporting external simulations
- Long term goal:
 - Composition of models

Thanks! Questions?